

ANZAME 2010

FIRST ANNOUNCEMENT
& CALL FOR ABSTRACTS



James Cook University
Townsville, Queensland
13 – 16 July 2010
www.jcu.edu.au/anzame10



HOST CITY



Townsville

Townsville, Australia's largest tropical city, provides a premier destination for visitors wanting a genuine taste of 'Life in the Tropics'. Temperatures in North Queensland are generally moderate with the average temperature during July ranging from 26 to 13 degrees. Light, casual clothing is recommended for Townsville.

Townsville offers more than 300 sunny days each year – perfect weather to enjoy a diversity of experiences that range

from the excitement of bull-riding and 'barra' fishing, to the magic of Magnetic Island, the historical charm of Charters Towers, the breathtaking rainforest of the Paluma Ranges, the cane fields and community of the Burdekin and the pristine paradise of Mission Beach.

North Queensland has it all! Visit the reef, rainforest, tropical islands and the outback - the perfect playground for you to explore. For further information visit: www.townsvilleholidays.info



VENUE: *James Cook University, Townsville Campus*

The conference will be hosted by the School of Medicine and Dentistry at James Cook University.

James Cook University is located in the suburb of Douglas, a 13km trip from the conference accommodation hub on Palmer Street in the CBD. Conference shuttle buses will transport delegates to and from the University each day.

The keynote presentations will be held in the new lecture theatre (building 45) and the breakout rooms will be located in the new medical school (building 46) A campus map can be found on the conference website: www.jcu.edu.au/anzame10

SPONSORSHIP & EXHIBITION OPPORTUNITIES

The sponsorship of the ANZAME Conference provides a unique opportunity for your organisation. Sponsorship and exhibition opportunities are now open. For further information please contact Ray Park on ray.park@jcu.edu.au or visit the conference website www.jcu.edu.au/anzame10

PLANNING COMMITTEE

Ray Park

Chair—Organising Committee: Medicine and Dentistry

Gary Hamlin

Chair—Scientific Committee: Veterinary and Biomedical Sciences

Linda Crane

Faculty of Medicine, Health and Molecular Sciences

Jenine Godwin

Indigenous Health Unit: Faculty of Medicine, Health and Molecular Sciences

Robert Hedlefs

Veterinary and Biomedical Sciences

Jenny Kelly

Nursing, Midwifery and Nutrition

Peter Malouf

Medicine and Dentistry

Susan Morrison

Public Health, Tropical Medicine and Rehabilitation Sciences

Kimberly Owens

Medicine and Dentistry

Tarun Sen Gupta

Medicine and Dentistry

Sundram Sivamalai

Medicine and Dentistry

John Smithson

Pharmacy and Molecular Sciences

CONFERENCE MANAGEMENT

Tailored Statements
by Antoinette Woods

Antoinette Woods
Conference Manager
PO Box 298 Hyde Park Qld 4812
T: 07 4725 5019 E: info@tailoredstatements.com.au



KEY DATES

Abstracts submissions	NOW OPEN
Deadline for abstract submission	Close of business 8 February 2010
Acceptance emailed	19 March 2010
Registration open	March 2010
Provisional Program available	9 April 2010
Presenter/early bird registration close	7 May 2010

PROGRAM OVERVIEW

Conference theme:

ANZAME10 'Overcoming BARRIERS, RE(E)Forming professional practice' challenges us to identify barriers and opportunities impacting upon health professional education; and to respond to these with dynamic, progressive professional practice.

2010 marks the 100 Year anniversary of the release of the Flexner Report into medical education. This conference will consider the journey that health professional education has undertaken in responding to emerging 'best practice' and will seek to help chart a course forward to continue overcoming the barriers that impinge upon the ability of health professional education to 'transmit knowledge, to impart skills, and to inculcate the values of the profession'.

The organising committee invites you to join us in the beautiful tropics to engage in stimulating debate and discussion, to explore the barriers and opportunities currently facing health professional education and to challenge yourself to re(e)form your professional practice in response to these.

Sub Themes:

- Overcoming barriers: Integration of, and student engagement with, the behavioural, biomedical and social sciences.
- Re(e)forming practice: Interprofessional education – the translation of effective learning strategies across professions
- Overcoming barriers: Teaching students 'outside of the box'
- Re(e)forming transitions: Supporting students through critical transitions
- Re(e)forming assessment practices: When is enough, enough?
- Overcoming the barrier of distance: Learning in dispersed and underserved environments

Overcoming Barriers and Re(e)forming the Building Blocks of Health Professional Education

- Assessment
- Evaluation
- Curriculum Design
- Selection
- Simulation
- Preparation for clinical practice
- Technology and the Classroom
- Authentic contexts for learning – scenario based learning, work integrated learning, placements
- Discipline based teaching and integration
- Group work, team work, reflective practice and self directed learning
- Communication skills – interpersonal, client/patient, interprofessional
- Student well being and self care
- The student voice:
 - Reflections upon learning experiences and assessment
 - Research and its educational implications

Who should attend?

ANZAME is the focal point for educators in the health professions in western Pacific region and aims to promote, support and advance education in the health professions. Therefore attendance by the following groups of people is warmly welcomed:

- Academic staff teaching in allied health programs
- Clinicians teaching in allied health programs
- Undergraduate students and postgraduate students
- Researchers interested in health professional education
- Those interested in assessment, evaluation or curriculum design



PROVISIONAL PROGRAM OUTLINE

Tuesday 13 July 2010

0900 – 1700	Pre-Conference Workshops	James Cook University
1600 – 1730	Delegate Registration	
1800 – 2030	Welcome Reception	Reef HQ Aquarium

Wednesday 14 July 2010

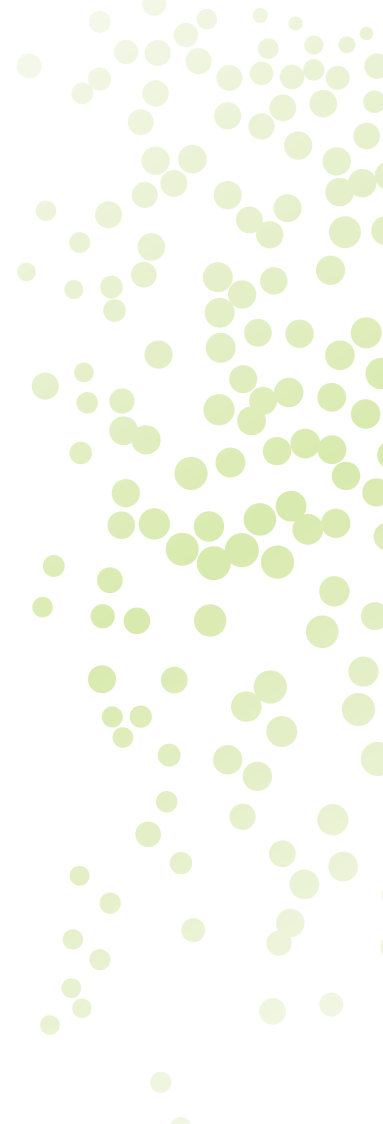
Morning	Delegate Registration Plenary Sessions	James Cook University
Morning Tea	Exhibition Posters and networking	
Morning	Concurrent sessions	
Lunch	Exhibition Posters and networking	
Afternoon	Plenary Sessions	
	Concurrent sessions	
Evening	Free Night	Dine on Palmer Street

Thursday 15 July 2010

Morning	Delegate Registration Plenary Sessions	James Cook University
Morning Tea	Exhibition Posters and networking	
Morning	Concurrent sessions	
Lunch	Exhibition Posters and networking	
Afternoon	Plenary Sessions	
	Concurrent sessions	
Evening	Conference Dinner	Rydges Southbank, Palmer Street

Friday 16 July 2010

Morning	Delegate Registration Concurrent Sessions	James Cook University
Morning Tea	Exhibition Posters and networking	
Morning	Concurrent sessions	
Lunch	Exhibition Posters and networking	
Afternoon	Concurrent sessions	
	Close	





**Deadline for abstract submission:
8 February 2010**

SUBMISSION OF ABSTRACTS

On behalf of the ANZAME10 Scientific Committee we invite you to submit an abstract to the conference addressing either key sub-theme or one of the foundational building blocks outlined under the conference themes.

Abstracts are due by Friday 8 February 2010 and authors are requested to submit abstracts for the following style of presentation:

- Poster (10 min)
- Small group presentations (20 min)
- PeArL session (45 min)
- Workshop (45 – 90 min)

Presentation formats

As its core ANZAME values communication and importantly active participation. Conference presentations strive to embody effective communication and encourage interaction between society members, guests, presenters and attendees. Presentation formats are designed to inform active participation with specified time allocation for group discussion and interaction.

Information on selection criteria

Please visit the conference website, click on the contribution tab and you will find the selection criteria and scoring sheet that will be used to review the various presentation formats.

Poster presentations

Posters will be displayed for the duration of the conference. Each poster will be allocated a 1 metre wide x 2 metres high board and the poster must fit within this area. Presenters can nominate before the conference to present their poster in a 10 minute poster session held concurrently to the regular conference sessions.

Small group presentations

Presenters will be allocated 20 minutes including 10 minute presentation time to highlight the main points, followed by a 10 minute discussion.

Personally Arranged Learning Sessions (PeArLs)

PeArL sessions will be allocated 45 minutes – 15 minutes to define the topic plus 30 minutes for open discussion. PeArL sessions allow an opportunity for those who are developing ideas, those who are taking ideas from development into implementation and those who are planning evaluation of their ideas, to share, discuss and gain insight into their positions by tapping into the wisdom and experience of others.

Workshops

Conference workshops will be allocated either 45 or 90 minutes as requested by the presenter(s). Workshops are working sessions with defined objectives, such as defining the scope and nature of an education issue, developing a plan of action, solving a problem, or demonstration of educational innovations with hands-on experience.

Presenter registration

All presenting authors must register and pay the appropriate conference fee by 7 May 2010. Speakers need to meet their own travel and accommodation costs. It will be assumed any presenter not registered by this date has withdrawn and their abstract will be removed from the program.

Full paper publication

We encourage presenters to submit their full papers for consideration for publication in the ANZAME journal – Focus on Health Professional Education: A Multidisciplinary Journal.

AV equipment

A data projector, computer (IBM compatible), whiteboard and slide forwarder will be available in each room. Presenters are not able to use their own laptop to run their presentation.

Presenters will be required to take their PowerPoint presentations to the conference on a CD-ROM or USB memory stick. There will be a speakers preparation area where an audiovisual technician will load your presentation.

Accessing the “registration area”

When you register your abstract you will be given an access code and have the ability to set up a password. If you wish to make any changes you can do you by accessing your profile with your access and password.

Grants and Prizes

ANZAME invites nominations for awards, which are presented at the Conference. Nominations for the awards must be received by 15 March 2010. Please refer to the ANZAME website for further information.

Information for paper reviewers and those submitting abstracts

The 2010 ANZAME conference will use a double blind review process that meets requirements for peer review of publications. Reviewers will receive a paper devoid of the authors' names and institutions in order to ensure objectivity and anonymity.

Submission instructions

- Abstracts must be submitted online at www.jcu.edu.au/anzame10
- All abstracts must be original work.
- The abstract, being a précis of your paper, should be approximately 400 words. Your abstract must include the presentation title and the name, organisation, suburb, state and email address (optional) for each author. Indicate the presenting Author(s).
- You are welcome to submit multiple presentations.
- Indicate preference of presentation and conference theme.
- The title should be brief, explicit and typed in Title Case.
- If submitting more than one abstract, information requested in the abstract submission form must be completed and submitted with each abstract.
- Acceptance or otherwise is at the discretion of the Conference Program Committee. The presenting speaker will be advised in writing of the Committee's decision 19 March 2010.
- Upon acceptance of abstracts, presenting speakers will be forwarded a set of speaker's briefing notes.

The registration brochure, detailing a comprehensive program will be available on the website in March 2010.